

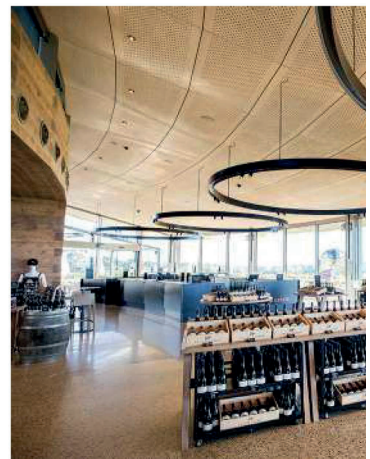
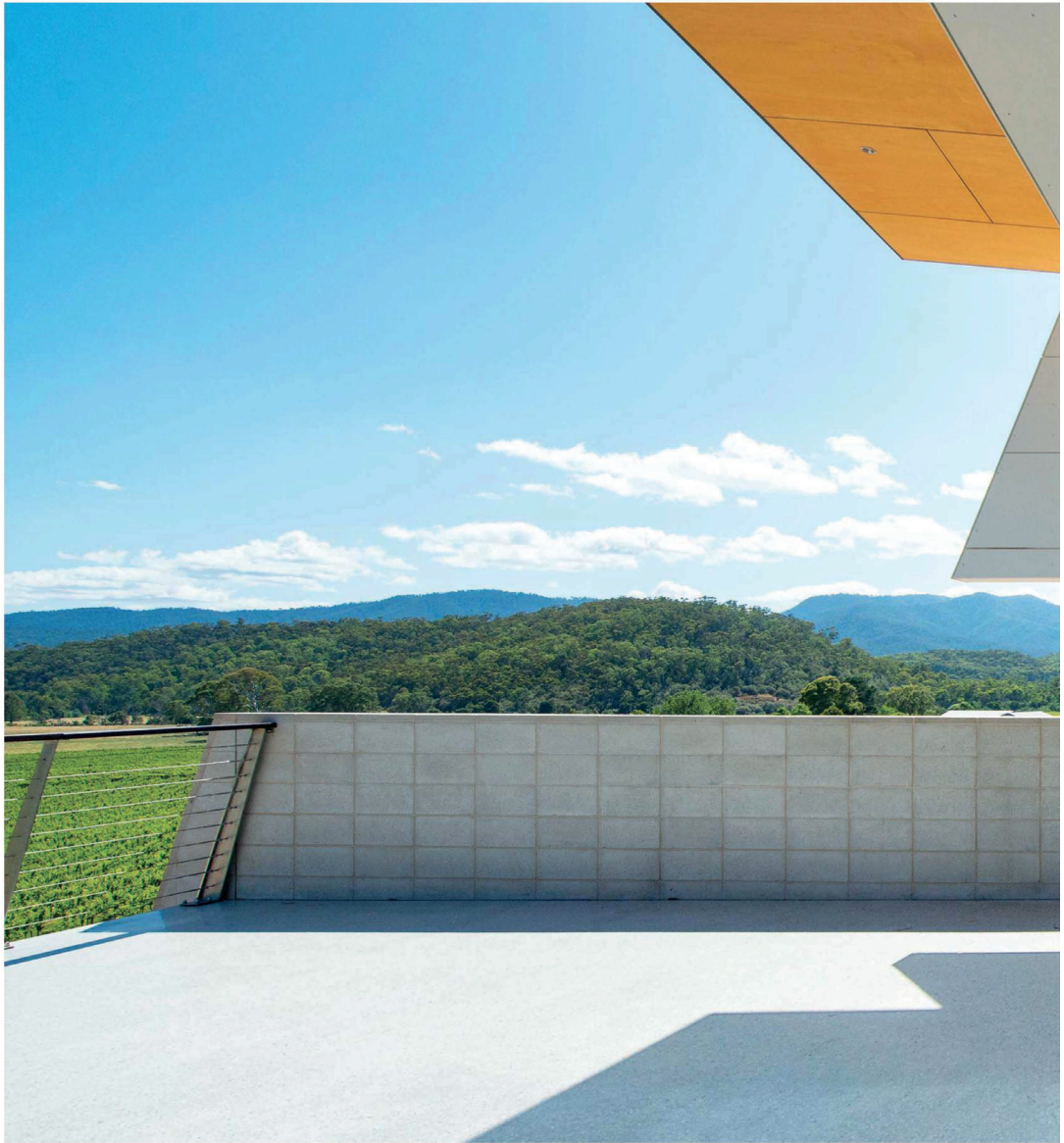


We bring Architects Imagination to Life

[www.keystonelinings.com.au](http://www.keystonelinings.com.au)













## ARCHITECTURAL RANGE

### KEY-PLY

Perforated KEY-PLY panels are engineered to create a natural and organic timber appearance. A variety of aesthetics can be created with pre-finishes including metallic, wood grain and pearl effects with a variety of perforation patterns and borders.

The inherent acoustic qualities of timber can be combined with comprehensive perforation techniques and backing materials to achieve optimum noise reduction, especially when used with K100 backing.

### APPLICATIONS

Interior and exterior walls and ceilings including:

- high traffic area walls
- building entrances and foyers
- high impact wall linings in shopping centres and hotels
- hallways
- auditoriums
- theatres
- studios

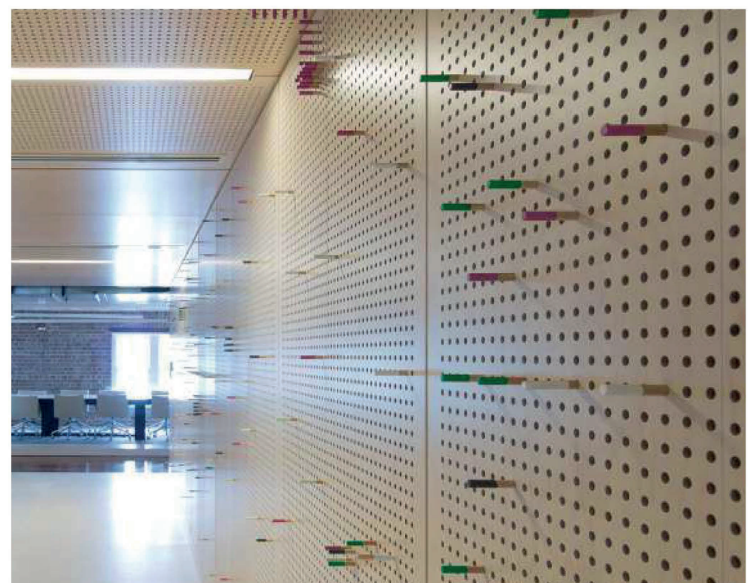
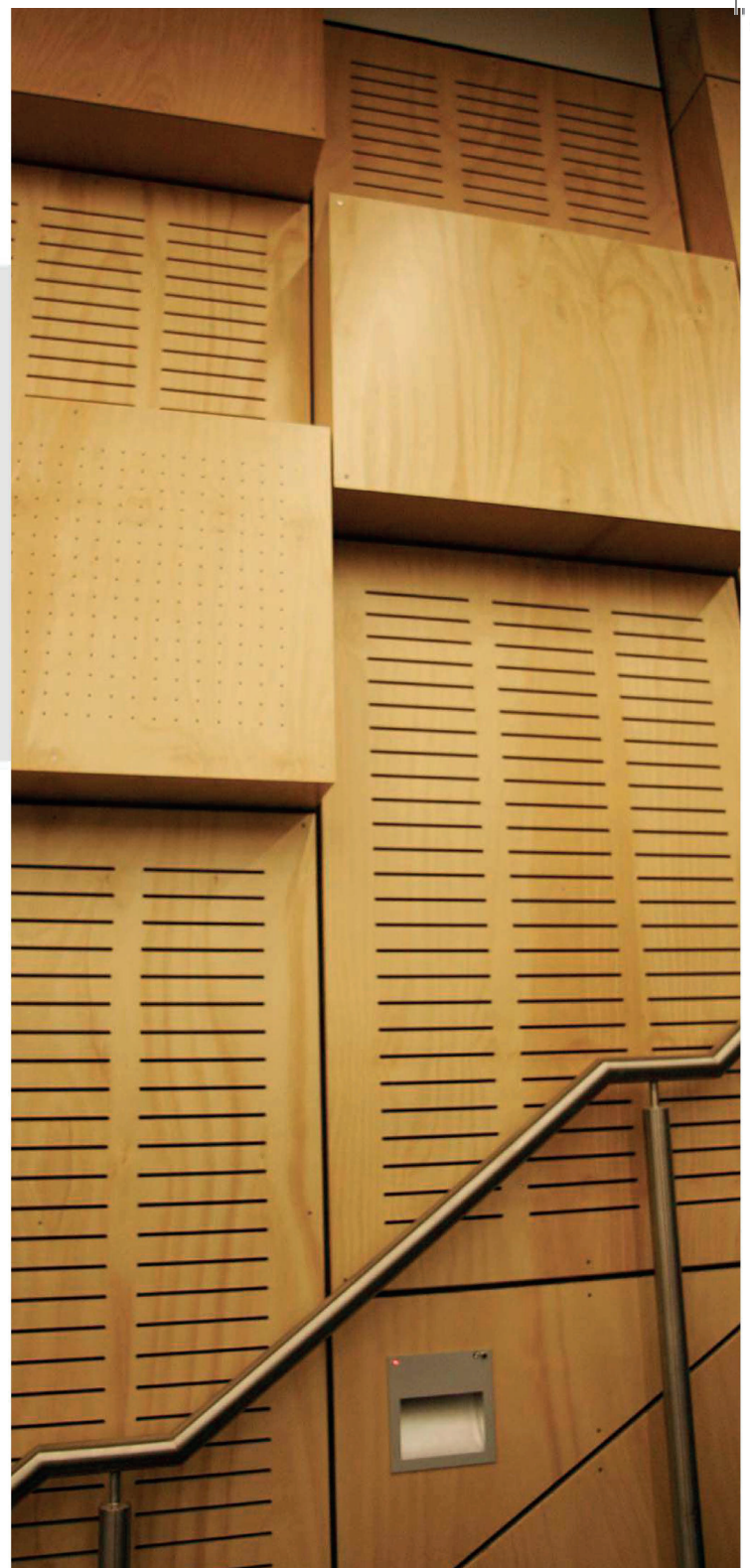
### FEATURES AND BENEFITS

- natural feel and warmth of timber
- a myriad of finishes and styles
- low embodied energy
- thermal insulating properties
- cost effective
- versatile in design and shape
- impact resistant
- lightweight
- can be used with Rondo System®
- can be used with the Smartfix® Fixing System
- Australian-made

### FINISHES

- veneers – vast selection from Designcorks' own range or your nominated veneer
- clear finish
- polyurethane- matt, satin or full gloss finish
- polyurethane stain – matt, satin or full gloss finish
- low VOC

**Note:** Matt is non-gloss, Satin is 30%,  
Full gloss is 100%



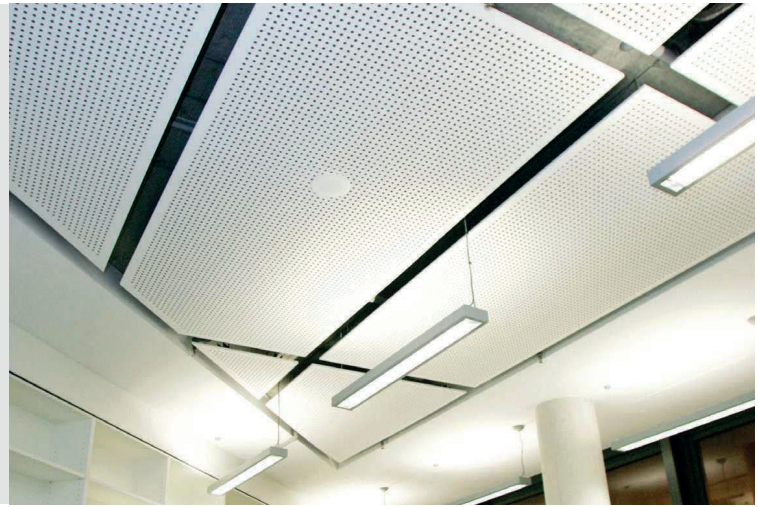


## KEY-LENA

### **MDF (MEDIUM DENSITY FIBREBOARD) E0, E1, MOISTURE RESISTANCE AND STANDARD MDF**

With an endless list of pre-finished options to choose from, KEY-LENA panels can be perforated, patterned, slotted or shaped to provide maximum noise reduction.

For even better acoustic performance, KEY-LENA can be combined with K100 backing.



### **APPLICATIONS**

- internal acoustic walls
- decorative walls in hallways, hotels, clubs and offices, conservatories, libraries or auditoriums

### **FEATURES AND BENEFITS**

- available in a range of finishes including timber grain, metallic and pearl
- cost-effective
- can provide the natural look of timber
- can be perforated, slotted or patterned
- good acoustic properties
- suitable for a variety of applications
- can be used with Rondo System®
- can be used with the Smartfix® Fixing System
- Australian-made

### **FINISHES**

- laminates - including Laminex and Formica
- veneers - natural and reconstituted
- KEY-NIRVANA - concept veneer
- polyurethane - satin, full gloss, metallic, pearl, stained or low yellowing finish
- polyurethane - metallic, pearl, satin or full gloss finish
- polyurethane stain - matt, satin or full gloss finish
- low VOC

Note: Matt is non-gloss, satin is 30%

Full gloss is 100%





## ARCHITECTURAL RANGE

### KEY-ECLIPSE

#### FIRE RETARDANT MDF - GROUP 1 EO RATING

With fire retardant characteristics inherent in its MDF core, KEY-ECLIPSE is unrivalled as a strong, durable product for commercial applications. It can be perforated, slotted and enhanced with a range of decorative pre-finished options. KEY-ECLIPSE is one of the most eco-friendly fire rated boards available and offers greater sound reduction when combined with K100 backing.



#### APPLICATIONS

- internal acoustic walls
- decorative walls in hallways, hotels, clubs and offices, conservatories, libraries or auditoriums
- age care facilities
- hospitals
- educational facilities
- theatres
- auditoriums
- stairways
- lift lobbies

#### FEATURES AND BENEFITS

- inherently fire retardant
- can be perforated, slotted or patterned
- decorative feature
- high acoustic performance
- available in a range of finishes including timber grain and metallic
- cost effective
- can provide the natural look of timber
- suitable for a variety of applications
- can be used with the Smartfix® Fixing System

#### FINISHES

- painted
- laminates
- veneers
- reconstituted veneers
- clear satin finish
- KEY-NIRVANA – concept veneer
- polyurethane – satin, full gloss, metallic, stained or low yellowing finish
- low VOC – environmentally friendly

Note: Matt is non-gloss, Satin is 30%, Full gloss is 100%





## KEY-BOARD

### PLASTERBOARD

Used for acoustic and decorative wall and ceiling lining, KEY-BOARD provides superior sound insulation, usually with 10-25% of the surface area open for maximum acoustic performance.

Excellent design flexibility is provided by the variety of panel sizes, perforations and patterns available, which can be customised.

KEY-BOARD can be used in recessed edge panels for seamless integration with other plaster features. Ask Keystone about the diverse options available. K100 backing can be added to enhance KEY-BOARD's acoustic properties and act as a structural deterrent to pests and insects.

### APPLICATIONS

- interior acoustic wall and ceiling systems for lecture theatres, cinemas and auditoriums
- ceiling and wall feature panels
- partition walls

### FEATURES AND BENEFITS

- high acoustic performance
- can be perforated, slotted or patterned
- can be fixed with Rondo System®
- suitable for a variety of applications
- available in a wide range of panel sizes
- lightweight and easy to install
- potential to be recycled
- has a low embodied energy
- offers broad design scope and can be easily used with other materials
- cost effective
- Australian-made

### OPTIONS

- plain or shaped panels
- tiles
- impact resistant board



## ARCHITECTURAL RANGE

### KEY-ENDURA

#### FIBRE CEMENT

Produced from uniquely-perforated fibre cement, KEY-ENDURA's long lasting and durable qualities make it ideal for ceiling, wall and wet area applications. These strong, lightweight acoustic panels are available in various thicknesses and sizes and can be custom cut and shaped.

Choose from a range of finishes for artistic effect. Achieve additional soundproofing with K100 sound absorptive backing.

#### APPLICATIONS

- internal acoustic walls
- eaves linings
- acoustic partitions
- fire and party walls
- office ceilings and walls
- clubs and hotels – smokers' terraces, outdoor gaming areas, alfresco dining areas
- foyers
- restaurants

#### FEATURES AND BENEFITS

- cost effective
- durable
- fire resistant
- easy to install and maintain
- Australian-made

#### FINISHES AND OPTIONS

- undercoat option available (on-site painting by others after installation is recommended)
- plain or shaped panels
- cut-to-size panels
- tiles
- eaves lining

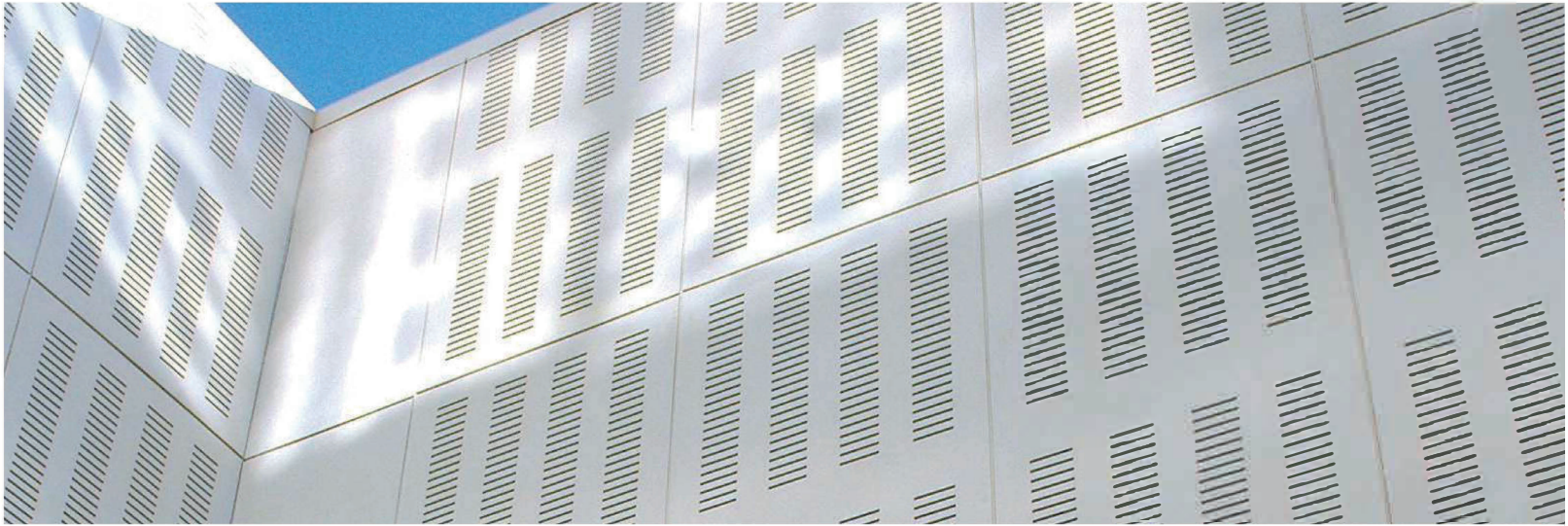




# KEY-KOMPRESS

## COMPRESSED FIBRE CEMENT

Made from high density compressed fibre cement perforated to achieve excellent acoustic properties, KEY-KOMPRESS is particularly effective in building facades and commercial cladding applications. It is strong and has a smooth surface which can be pre-sealed to minimize construction and painting time. KEY-KOMPRESS can be used with K100 backing to maximise acoustic properties.



## APPLICATIONS

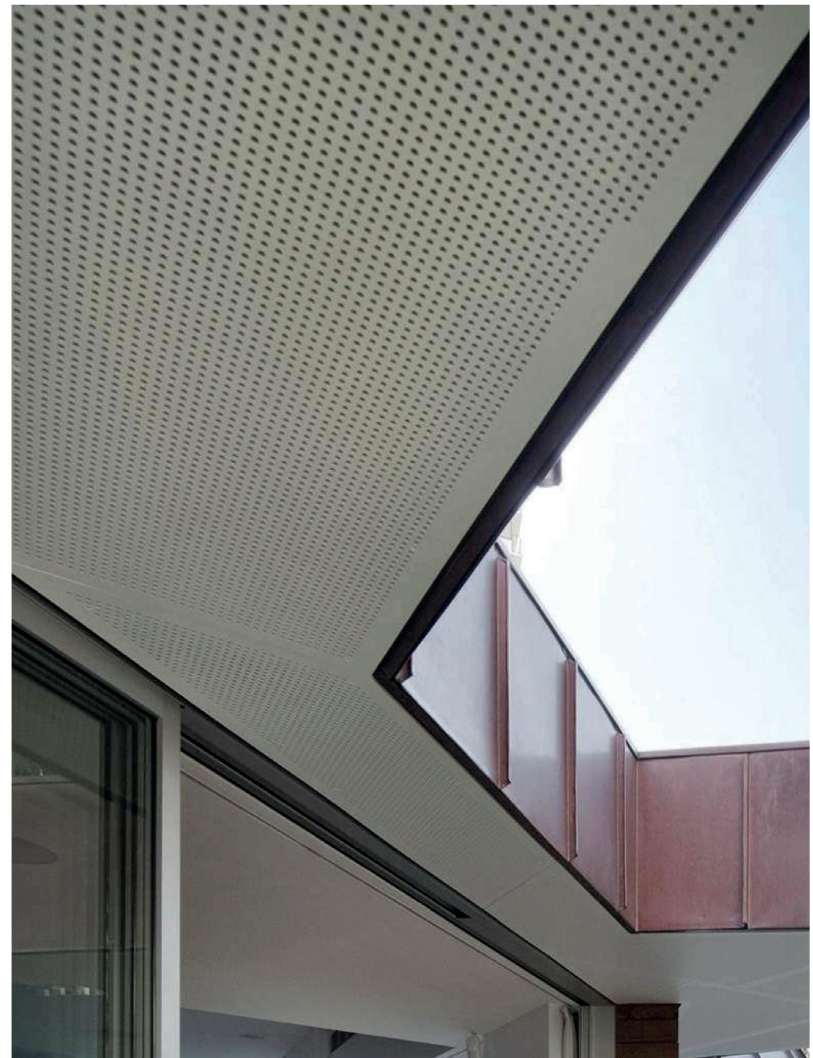
- internal walls
- exterior building facades
- eaves linings
- industrial buildings and warehouses
- schools and universities
- clubs – outdoor terraces, exterior partitions, smokers'/gaming areas

## FEATURES AND BENEFITS

- impact resistant
- robust and long lasting
- weather resistant
- can withstand extreme temperature changes
- unaffected by rot, termites
- ideal for wet area applications
- excellent acoustic properties
- Australian-made

## FINISHES AND OPTIONS

- undercoat option available (on-site painting by others after installation is recommended)
- plain or shaped panels
- cut-to-size panels
- tiles
- eaves lining





## ARCHITECTURAL RANGE

### KEY-NIRVANA

KEY-NIRVANA is an ideal choice for a cost effective quality product. Key-Nirvana panels can be perforated, patterned, slotted or shaped to provide maximum noise reduction. Its concept finish is the best in its field and unlike other concept vinyl's Key-Nirvana range will not peel away from its substrate or mark easy from tapes. Our selection offers realistic timber grain and coloured finishes allowing the designer to achieve a creative and aesthetically pleasing space.

#### APPLICATIONS

- interior acoustic wall and ceiling systems
- feature panels for wall and ceiling
- partition walls
- ideal for ceiling tiles

#### FEATURES AND BENEFITS

- pre-finished panels allow for easy installation
- can be manufactured to suit site requirements
- cost-effective
- can be perforated, slotted, patterned
- good acoustic properties – available with K100

#### FINISHES



Euro Walnut



Euro Maple



Euro Pine



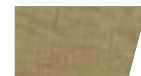
Euro Cherry



Euro Oak



Euro Beech



Honey Maple



Russet Bronze



Mocca



Chocolate







## KEY-DESIGNA

### **CUSTOM ENGINEERED**

KEY-DESIGNA panels are one-of-a-kind solutions, custom engineered and specially manufactured for specific design criteria.

Keystone's team will work with you to devise a precise solution tailored for your needs. This may include combining a range of materials, shaping and grooving techniques, perforated lettering for internal signage, decorative patterning and more.

### **APPLICATIONS**

- feature walls
- any internal walls
- clubs and hotels
- schools
- office refurbishments

### **FEATURES AND BENEFITS**

- endless design possibilities
- fully customised to your aesthetic and acoustic requirements

### **FINISHES AND OPTIONS**

- 3D modular shapes



## ARCHITECTURAL RANGE

### KEY-BEAMS Lightweight Beams

Key-beams are made of lightweight material with a solid core manufactured with MDF skins to both sides. Its structure is deceptively strong and will not warp or twist. It is 3 times lighter than MDF and unlike solid timber which is heavy and expensive. It is distinctive creative baffle for acoustic performance.

#### APPLICATIONS

- interior and exterior walls and ceilings
- hospitality ie restaurants & cafes
- commercial fitouts ie shopping centres
- workplace – offices, foyers

#### FEATURES AND BENEFITS

- can be cut and assembled onsite
- lowers cost of suspended support systems due to its lightweight nature
- beams are removable if required
- high strength and stiffness to weight ratios
- fire performance meeting Group 3 Fire Rating
- comes in long continuous lengths for less joins
- machine ability allows for mitre joins
- versatile – designs limited only by the imagination
- excellent sound and thermal insulation

#### FINISHES

NAVCORE: available in their range of decorative finishes.

Consult Keystone for available options.

BALSA WOOD can be finished in:

- Natural timber veneer or reconstituted veneers (to your specification) with a clear finish that is available in (0% 10% 30% or 60% gloss level )
- KEY-NIRVANA decorative range of finishes
- Polyurethane 2 pac painted finishes – Dulux or similar to your specification
- Laminated finishes by Laminex, Polytec etc
- Printed graphic – to your specification





## R-LINE Grooved Profile Panels

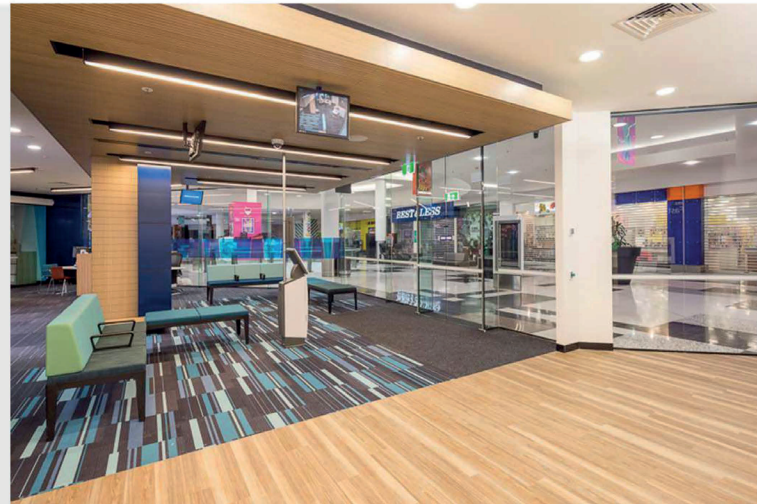
### R-LINE MDF grooved panels

R-Line linear architectural panels are a contemporary and stylish lining system.

R-Line provides an almost seamless appearance with a grooved profile and concealed joins.

These versatile panels are easy to install and are highly effective as a decorative and acoustic lining system.

They come in the form of planks that are assembled with a tongue and groove system to the edge of the planks.



### APPLICATIONS

- internal walls or ceiling linings
- workplace – boardroom wall and ceiling
- residential – media rooms
- commercial and hospitality fitouts

### FEATURES AND BENEFITS

- large selection of painted and veneered finishes
- high degree of strength
- linear contemporary style
- linear grooved panels
- easy to install tongue and groove system
- as an acoustic treatment to walls and ceilings

### FINISHES

Coloured MDF – consult Keystone for available coloured options

Paints:

- laminates - including Laminex and Formica
- veneers – natural and reconstituted
- KEY-NIRVANA – concept veneer
- polyurethane – satin, full gloss, metallic, pearl, stained or low yellowing finish
- polyurethane – metallic, pearl, satin or full gloss finish
- polyurethane stain – matt, satin or full gloss finish
- low VOC

Veneers:

- Natural timber & reconstituted veneers to your specification

K100 acoustic textile backing shall be factory applied to rear of panels to enhance acoustic performance.





## SLOTING, PATTERNING AND PERFORATING

### AT YOUR SERVICE

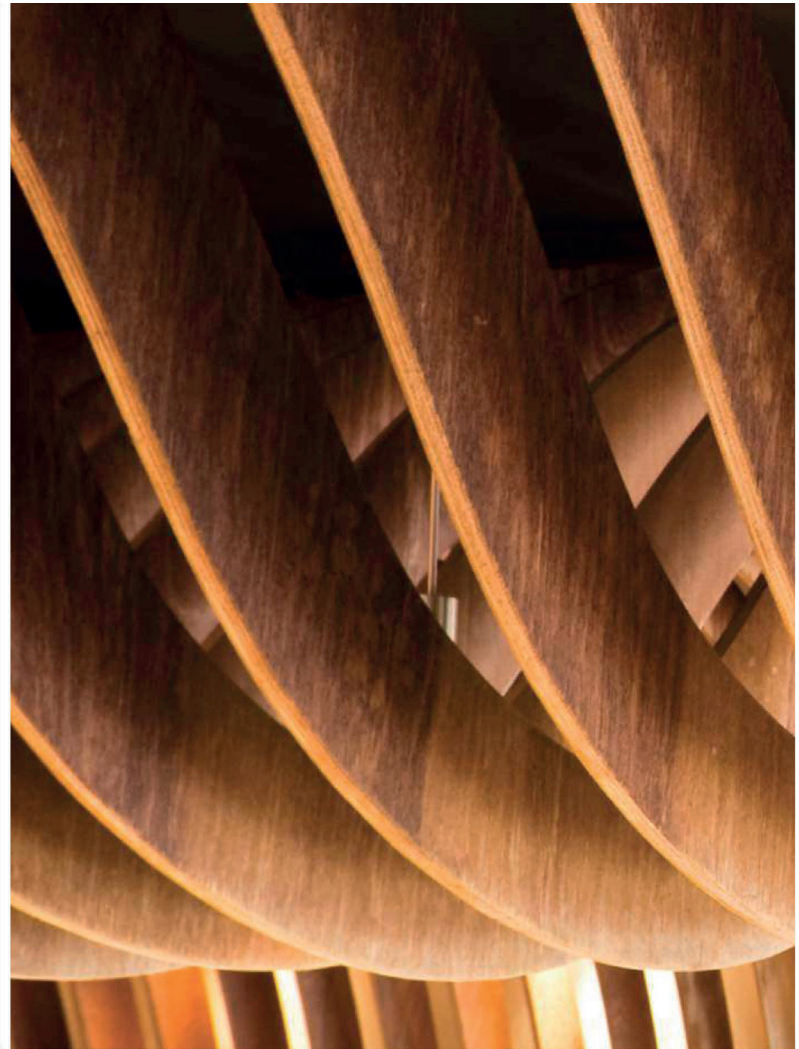
You can rely on Keystone to provide quality ceiling, lining and wall panels engineered for superior acoustic performance using its expert slotting, patterning and perforating techniques. Plain panels are also available.

Solid experience and advanced manufacturing capabilities allow Keystone to offer acoustic panels custom designed for your requirements cost effectively.

Production machines are linked to off-line programming, ensuring accuracy and product consistency.

Fixing apertures, slotting and radius corners can all be added in Keystone's production facility. This is particularly beneficial if the perforated panel is to be fitted as part of a larger fabrication or structure.

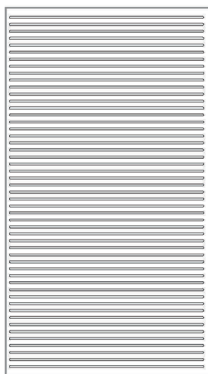
All Keystone panels are finished to the highest standard, ready for installation.



### SLOTTED PATTERNS

Keystone offers six standard slot layout options as shown below. Slot width and spacing can all be chosen by you from our tooling library. When specific acoustic performance is required Keystone can assist with selecting the most appropriate pattern and open area.

**KS1**



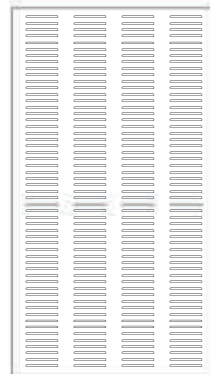
**KS2**



**KS3**



**KS4**



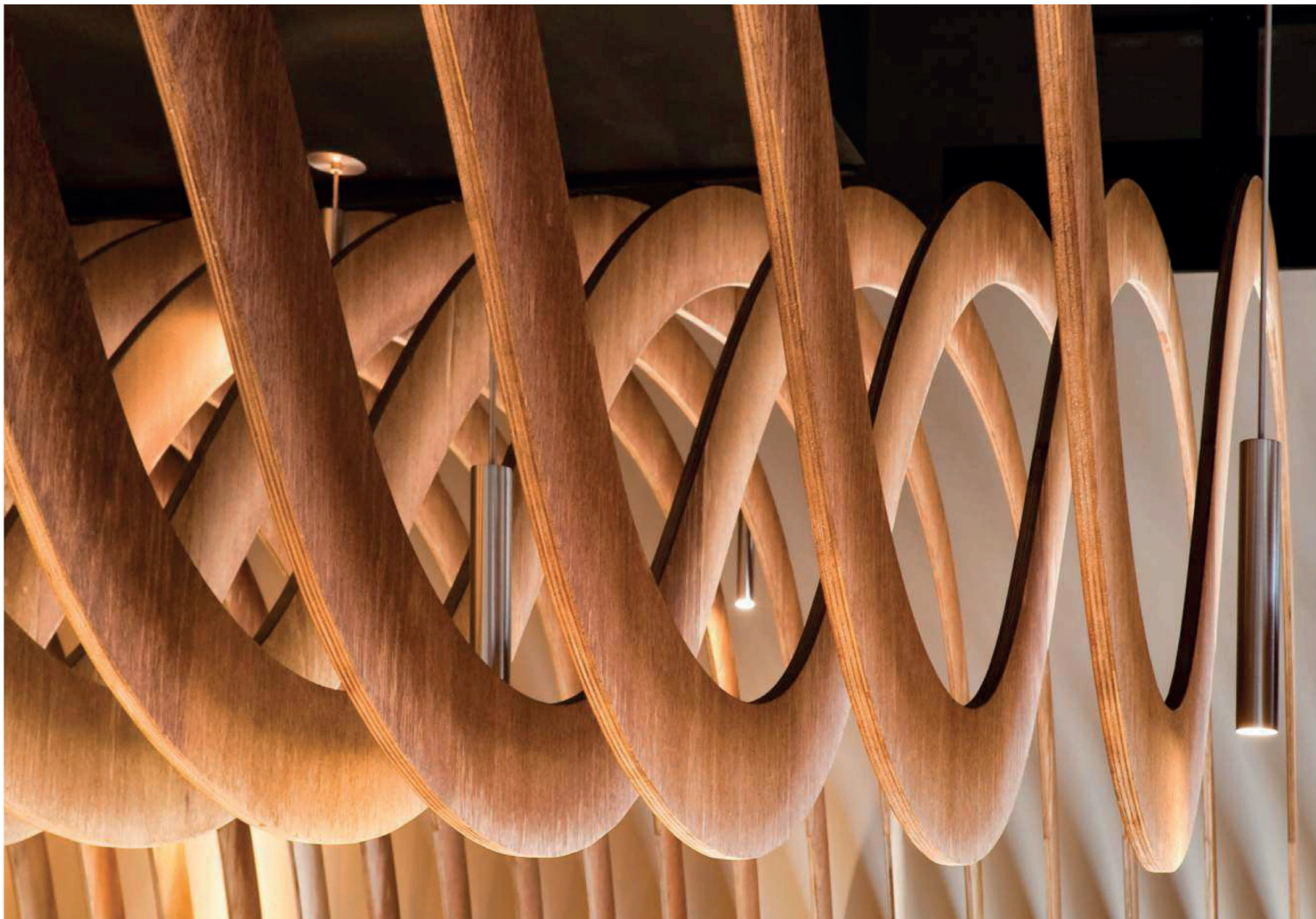
**KS5**



**KS6**



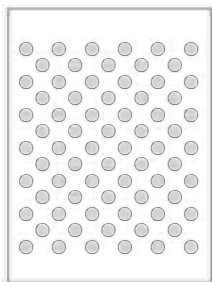




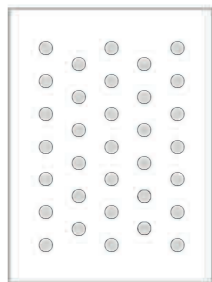
## PERFORATION PATTERNS

Keystone offers five standard layout options with the sixth option at your discretion for bespoke design. Our perforated layouts shown below can be manufactured with a number of hole sizes and centre spacing options. Keystone offers the flexibility of the hole sizes from our extensive tooling library.

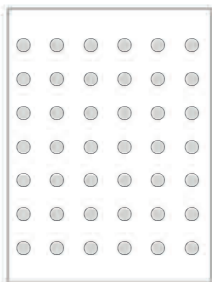
KP1



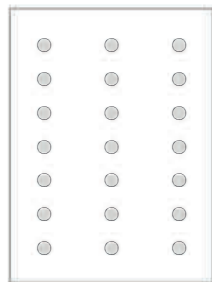
KP2



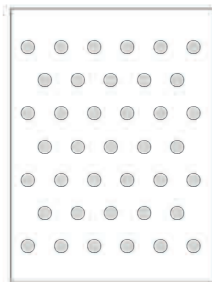
KP3



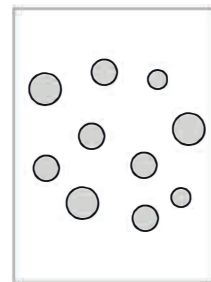
KP4



KP5



KP6 - CUSTOM



To meet the growing demands for unique bespoke design we have the capabilities to produce complex patterns and design features. With Keystone's experience and unique software systems your concepts too can become reality.



## ARCHITECTURAL AND INNOVATIVELY DESIGNED SOLUTIONS

For over 40 years, Keystone Architectural Linings and Acoustic Solutions has specialised in designing and delivering innovative finishes and substrates that create beautiful, functional and high performance acoustic systems. Australian owned and operated, Keystone is much more than a simple supplier. Our range is constantly evolving and providing solutions that transform commercial spaces and facades into sophisticated architectural pieces.



Level 1 , 7- 8 Davis Road,  
Wetherill Park, NSW 2164

P: (02) 9604 8813

F: (02) 9609 5348

[www.keystonelinings.com.au](http://www.keystonelinings.com.au)