

# Gen-Eco FR Aluminium Beams

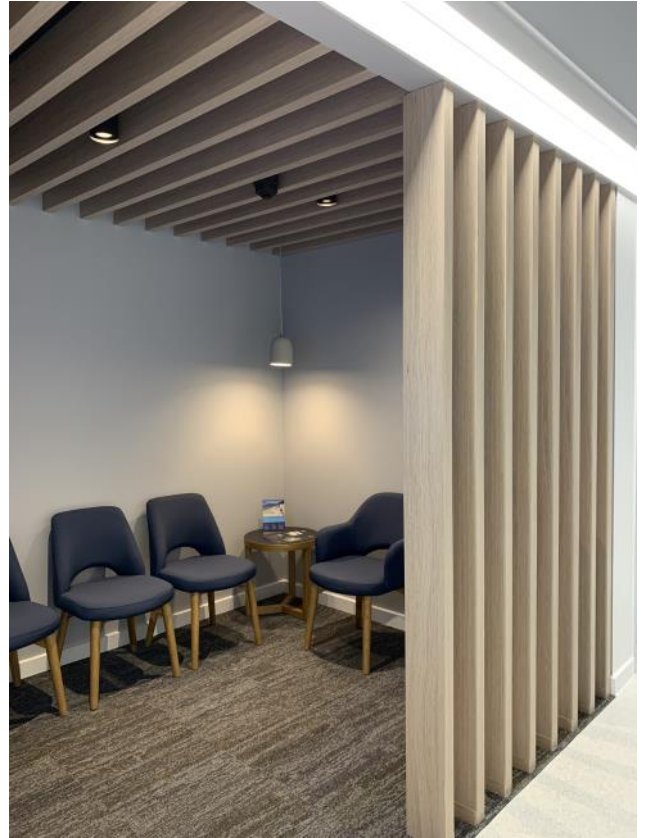


[www.gen-eco.com.au](http://www.gen-eco.com.au) P 07 3807 9308

Email—[sales@gen-eco.com.au](mailto:sales@gen-eco.com.au)

Utilising the unique advantages of digital printing, our FR Aluminium Beams have the following attributes:

- ◆ Aluminium is a non-combustible material with a melting point of 600+ °C making these beams the ideal solution to meet any Group 1 Fire Rated design needs.
- ◆ As we scan real timber as a starting point, the realism of our printed beams is superb. We have over 25 'off the shelf' timbers to choose from or we can start from scratch with your timber.
- ◆ The digital files can be altered by colour and tone broadening our range even further.

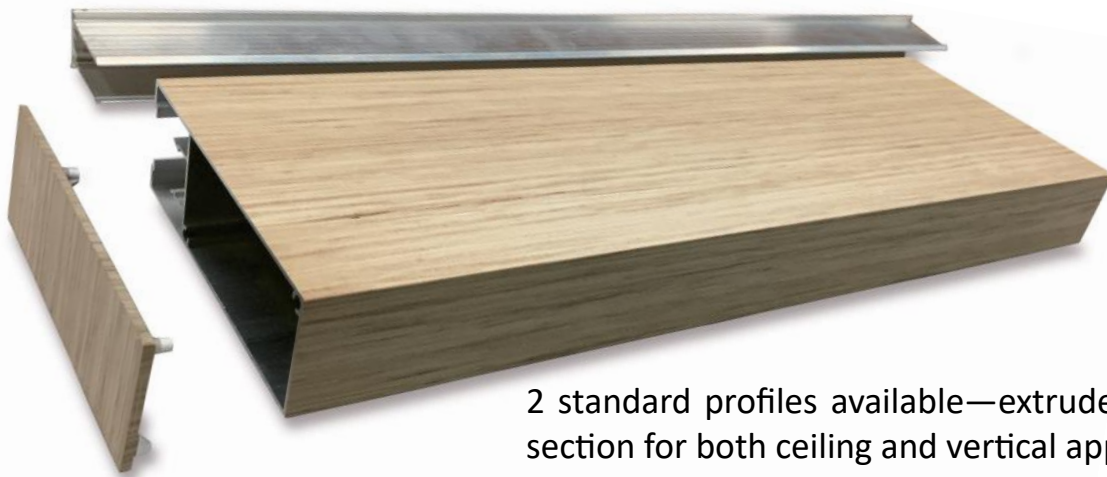


QLD X-Ray Bowen Hills Vertical & Ceiling Beams



Newmarket Village Food court area. Digitally printed aluminium beams in Heritage Walnut.

# Installation and Fixing Details

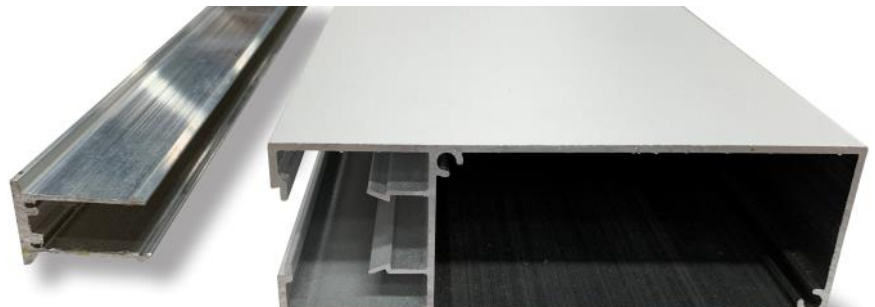
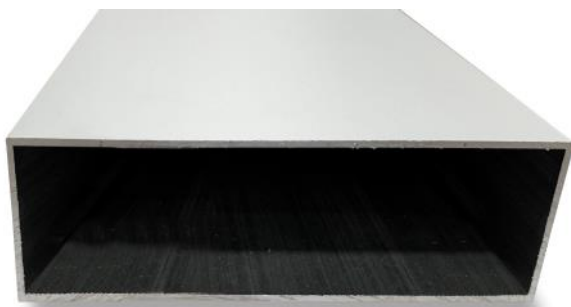


2 standard profiles available—extruded beams & solid box section for both ceiling and vertical applications.

Suitable for indoor and semi exposed areas.

Available in many timber prints, concrete and metal options.

Note—care needs to be taken during installation. Sharp edges of the aluminium have the potential to cause scratching of the print surface.



## Box Section

Lengths up to 3600mm

Standard Sizes:

100mm x 50mm

150mm x 50mm

200mm x 50mm

## Vertical application - free standing

Fix top and base of beams using aluminium angle section or flat aluminium plate.

## Vertical application - against wall

Beams can be back-screwed through MDF sheeting or similar.

## Suspended from Ceiling

Install using booker rod and furring channel. Beams are top fixed through furring channel. End caps not available with this method.

**Extruded Section** Concealed fixing clip allows for quick installation. Lengths up to 3600mm

Standard Sizes:

100mm x 50mm

150mm x 50mm

NOTE: Minimum of 90% of the concealed fixing clip needs to be installed. As an example, a 3600mm beam will require a clip length of 3200mm

## Direct to Ceiling

Fixing Clip can be screwed directly to ceiling and aluminium beams pushed up and snapped into place. Please be aware that once fixed the beams are quite rigid and not easy to remove. End caps (if required) are pushed into place.

## Suspended from Ceiling

Install using booker rod and furring channel. Beams are top fixed through furring channel into clip already snapped into beam. End caps (if required) are pushed into place.

## Vertical application - against wall

Fixing Clip can be screwed directly to wall and aluminium beams pushed and snapped into place. Please be aware that once fixed the beams are quite rigid and not easy to remove.



Just some of the choices for our printed aluminium beams.

[www.gen-eco.com.au](http://www.gen-eco.com.au)